

USB-ISP Programmer



Setup

Please download the *inf-file for the driver unit of the ISP-programmer:

www.avr-programmer.com/downloads/usb-isp/drivers.zip -> "Stange ISP Prog" or "DX_ISP.inf"

for Windows 2000, XP or Vista

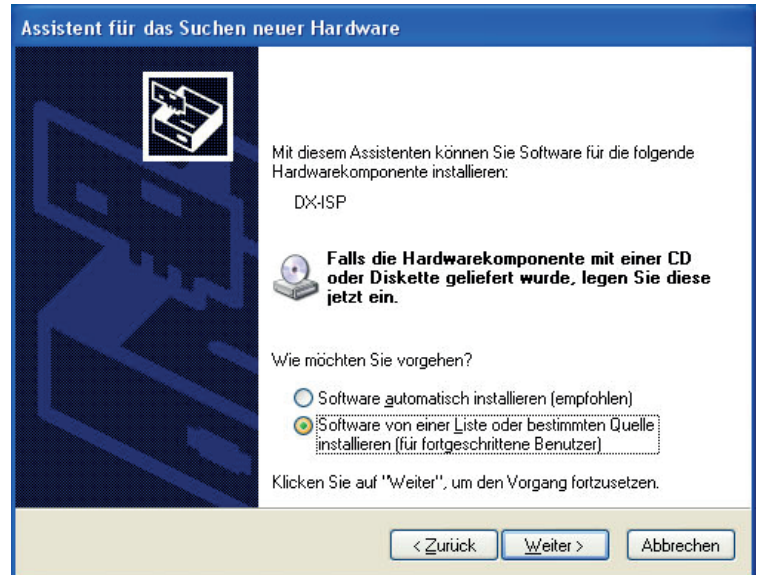
Store the *inf-file on your hard drive. Connect the programmer with the USB-side to your computer, it will run automatically.

While setting up Windows asks for a driver unit. The own Windows driver unit will be used the system is being told that by the special Stange_ISP_Prog.inf-file. Therefore tick the box like in the picture and press "Continue". In the next step, state where the *inf-file is located.

ISP-SPI-Speed:

Because of the USB-connection there are slightly differing ISP-frequencies compared to a STK500

STK500	ISP-Prog
921,6kHz	1MHz
230,4kHz	250kHz
57,6kHz	62,5kHz
28,8kHz	28,2kHz
4kHz	4kHz
603Hz	779Hz



LEDs

- USB-LED: light flashing while at-rest, flashing while USB is active
- Target-LED: Off while at-rest, on while access to target

Functions

- FLASH, EEPROM, Fusebits, write Lockbits, read, erase chips, read OSCCAL-register

Protocol

- STK500v2 (AVR-studio usable up to version 4.18)

Softwaresupport

- AVR studio (COM1...COM9) max. up to version 4.18
- AVRDUDE

- Bascom with setting Options->Programmer = STK500:

C:\Programme\Atmel\AVR Tools\STK500\stk500.exe and installed AVR Studio

Switch setting for normal programming in an user shift = both switches on "OFF" in case of necessity of voltage supply of the target:

- for one single AVR-controller only without own shift (e.g. at programming adapter) 5V need to be provided: 1=ON 2=ON

- general 3,3V maximal 120mA, 5V 150-500mA depending on computer

Switch 1=OFF =Target-Voltage off, ON = on , OFF=3,3V, ON=5,0V

- does not need power supply from target for programming operation

Scope of delivery

ISP-programmer in coloured case

USB 2.0 connection cable

SPI-connection cable 6 pin (Atmel standard – image on the right), ca. 15cm

Instructions

Support of the following controller:

Classic

AT90S1200, AT90S2313, AT90S2333, AT90S2343, AT90S4414, AT90S4433, AT90S4434, AT90S8515, AT90S8535

Tiny

ATtiny12, ATtiny13, ATtiny15, ATtiny2313, ATtiny24, ATtiny25, ATtiny26, ATtiny44, ATtiny45, ATtiny84, ATtiny85, ATtiny86, ATtiny261, ATtiny461, ATtiny861

Mega

Atmega88, Atmega103, Atmega128, Atmega1280, Atmega1281, Atmega16, Atmega161, Atmega162, Atmega163, Atmega164, Atmega168, Atmega169, Atmega2560, Atmega2561, Atmega32, Atmega324, Atmega325, Atmega3250, Atmega329x, Atmega48, Atmega64, Atmega640, Atmega644, Atmega645, Atmega6450, Atmega649x, Atmega8, Atmega8515, Atmega8535

Others

ATCAN128, AT90PWM2, AT90PWM2B, AT90PWM3, AT90PWM3B, AT90USB162, AT90USB646, AT90USB647, AT90USB1286, AT90USB1287 and all other ATMEGA-processors which support the ISP-application programming interface.

